

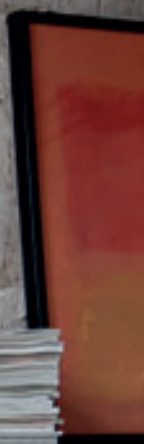
# Dado Open

## Product Sheet



**BERLIN**

**OSAKA**



# Dado Open

*Sinetica Design Lab*



Dall'evoluzione dei contenitori Dado, nasce Dado Open: un'architettura di elementi a giorno o con ante, appoggiati su pedane oppure free-standing, per arredare tutti gli ambienti di lavoro e di vita, aprendo un mondo di possibilità compositive e d'uso.


From the evolution of the containers Dado, Dado Open begins: an architecture of open elements or with doors, supported on platforms or free-standing, to furnish all areas of work and living, opening a world of possibilities of compositions and uses.

Dado Open est né de l'évolution des rangements Dado: un agencement d'éléments ouverts ou équipés de portes, sur socle ou en free-standing, pour aménager tous les espaces de travail et de vie, en ouvrant un monde de possibilités d'utilisation et de composition.



Composizioni. Configuration. Compositions. Konfigurationen. Composiciones.





"That the powerful  
play goes on and you  
may contribute a verse.  
What will your verse be?"  
J. KENNEDY

Aus der Weiterentwicklung der Elemente Dado geht Dado Open hervor: eine Bauweise offener oder Türelemente, die auf Podesten ruhen oder frei stehen, zum Einrichten aller Arbeits- und Lebensbereiche öffnet sich hier eine Welt der Anbau- und Einsatzmöglichkeiten.

De la evolución de los muebles contenedores Dado nace Dado Open: una arquitectura de elementos abiertos o con puertas, apoyados sobre tarimas o independientes, para amueblar todos los espacios de trabajo y de vida, abriendo un mundo de posibilidades compositivas y de uso.



1  
**Maniglia E.** Handle E. Poignée E. Griffe E.  
Manija E.

2  
**Maniglia D.** Handle D. Poignée D. Griffe D.  
Manija D.

3  
**Anta vetro con telaio.** Glass door with  
frame. Porte en verre battante encadrée.  
Glas Fluegel-tuer mit Rahmen. Puerta de  
cristal con marco.

4  
**Mensola in vetro.** Glass shelf. Tablette en  
verre. Glas-fachboeden. Estante en vidrio.

5  
**Modulo libreria.** Library module. Module  
etagere. Modul fuers Regal. Módulo  
estanteria.

6  
**Pedana.** Pedestal. Plateforme. Fussbrett.  
Base.

# Dimensions & Finishes





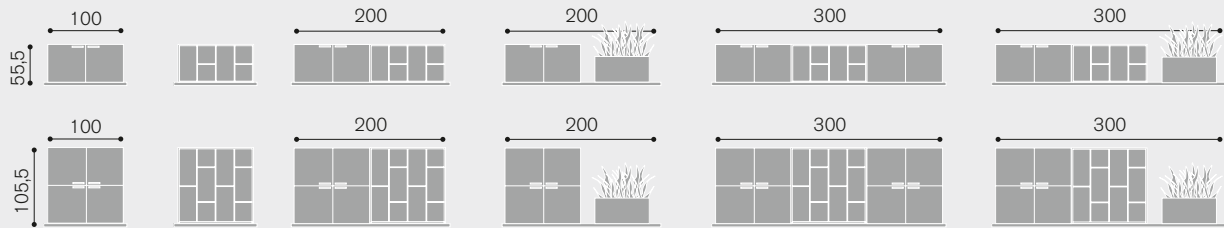
## Dado open

### Caratteristiche tecniche

Technical characteristic. Caractéristiques techniques. Technische produktarte. Características técnicas.

### Contenitore

Cabinets. Rangement. Schränke. Contenedores.



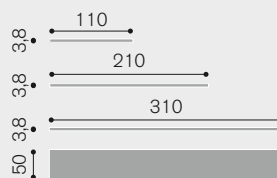
### Basi

Base. Piedement. Fusskreuz. Base.

Piedino  
Foot  
Pied  
Fuss  
Pie



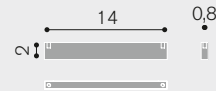
Pedana  
Pedestal  
Plateforme  
Fussbrett  
Base



### Maniglie

Handles. Poignées. Griffen. Manijas.

E



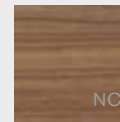
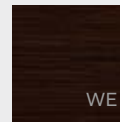
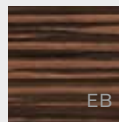
C - D



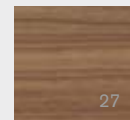
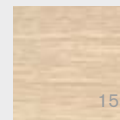
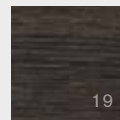
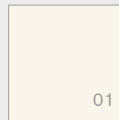
### Finiture

Finishes. Finitions. Ausführungen. Acabados.

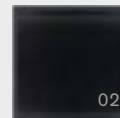
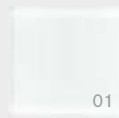
Ante legno  
Veneer door  
Porte ébénisterie  
venierte Tür  
Puerta de madera



Ante melaminico  
Melamine door  
Porte mélaminé  
Tür aus Melamin  
Puerta de melamina



Ante vetro  
Glass door  
Porte en verre  
Glas Flügel-tür  
Puerta de cristal



Scocca / Pedana  
Shel / Pedestal  
Structure / Plateforme  
Gestell / Fussbrett  
Estructura / Base

