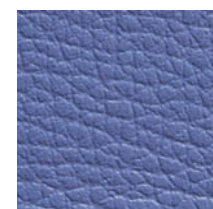
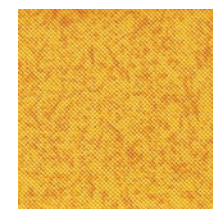
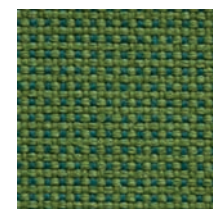
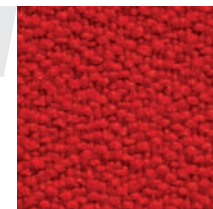
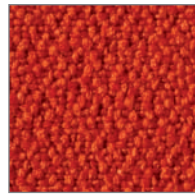




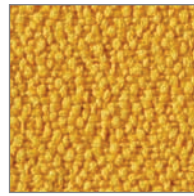
NUANCIER Tissus
FABRIC color chart



> ♥ *Xtreme*
M1



Orange 42
Orange 42



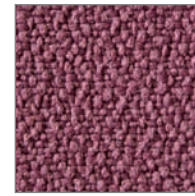
Jaune 67
Yellow 67



Beige 40
Beige 40



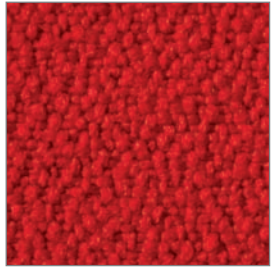
Aubergine XA
Aubergine XA



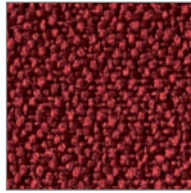
Vieux rose ZP
Old pink ZP



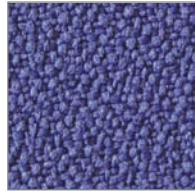
Framboise OR
Raspberry OR



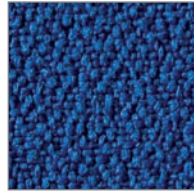
Rouge 30
Red 30



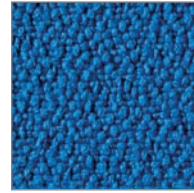
Bordeaux 43
Bordeaux 43



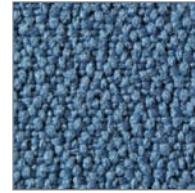
Lilas XB
Lilac XB



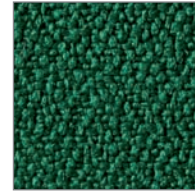
Bleu roi KE
Royal blue KE



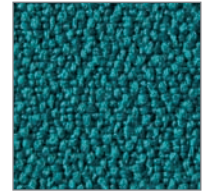
Bleu vif XD
Bright blue XD



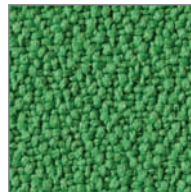
Bleu acier 6X
Steel blue 6X



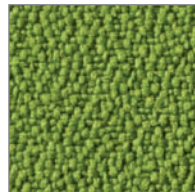
Vert bouteille KH
Bottle green KH



Vert canard XE
Teal green XE



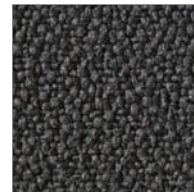
Vert lombok XF
Lombok XF



Vert pomme XC
Apple green XC



Noir 57
Black 57



Gris anthracite 90
Charcoal grey 90

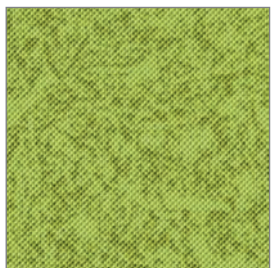


Gris moyen KJ
Mid grey KJ

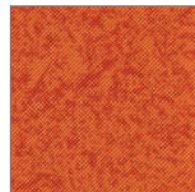


Gris clair YN
Light grey YN

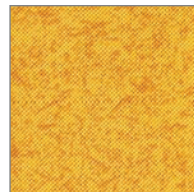
> ♦ *Diabolo*
M1 Enduits PVC



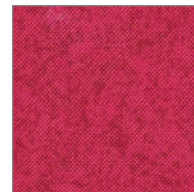
Anis 6G
Anis green 6G



Potiron 6E
Pumpkin orange 6E



Pollen ZS
Pollen ZS



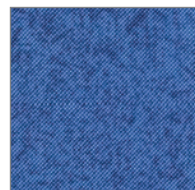
Fushia 7L
Fuschia 7L



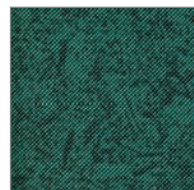
Oriflamme 7H
Golden flame 7H



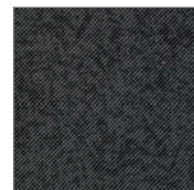
Eléphant 7G
Elephant 7G



Bleu marbré 6F
Marbled blue 6F



Vert malachite 7J
Mountain green 7J

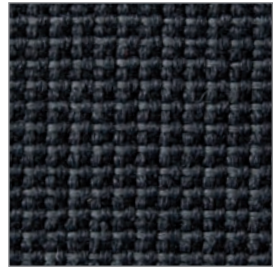


Anthracite 6H
Charcoal 6H



Blanc galet 7K
Pebble white 7K

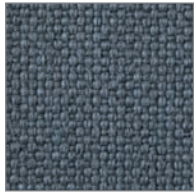
>  *King L*
M1



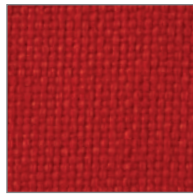
Chiné anthracite AC
Mottled charcoal AC



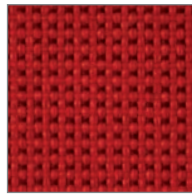
Noir 57
Black 57



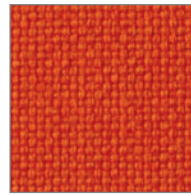
Gris moyen KJ
Mid grey KJ



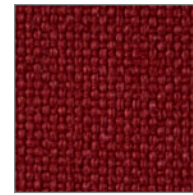
Rouge 30
Red 30



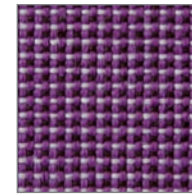
Chiné rouge KA
Mottled red KA



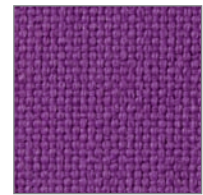
Orange 42
Orange 42



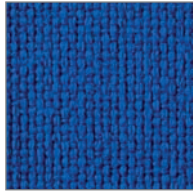
Bordeaux 43
Bordeaux 43



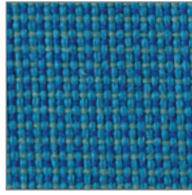
Chiné violet KB
Mottled violet KB



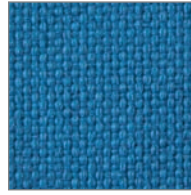
Violet KC
Violet KC



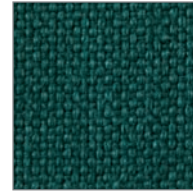
Bleu roi KE
Royal blue KE



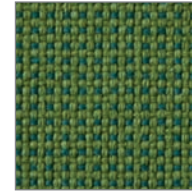
Chiné turquoise KD
Mottled turquoise KD



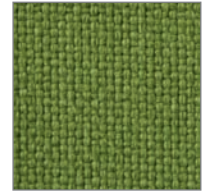
Bleu turquoise YH
Turquoise blue YH



Vert bouteille KH
Bottle green KH



Chiné vert KG
Mottled green KG



Olive KF
Olive KF

>  *Gingko*
M1 Enduits PVC



Seigle AQ
Natural rye AQ



Tomette AN
Terracotta AN



Mirabelle AP
Plum AP



Morgon AR
Wine AR



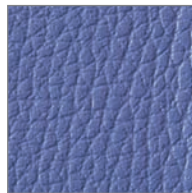
Groseille AS
Redcurrant AS



Pivoine AT
Peony AT



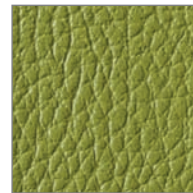
Nuit AU
Black night AU



Lavande AV
Lavender AV



Souris AW
Mouse grey AW



Amande PH
Almond PH



Anthracite AC
Charcoal AC



Chocolat PK
Chocolate PK

> Informations techniques

> Technical information

Tissu Range	Composition Composition	Poids/m2 Weight/m2	Résistance à l'abrasion Abrasion resistance	Solidité à la lumière Light fastness	Résistance au feu Fire resistance	Conseils d'entretien Care hints
♥ Xtreme	100% Xtreme FR	310 g/m2	100 000 cycles 100 000 rubs	6	EN 1021/1-2 BS7176 CRIB5 M1	Eponge humide Damp sponge
◆ Diabolo	84% PVC 16% coton	750 g/m2	50 000 cycles 50 000 rubs	>6	EN 1021-1 cigarette EN 1021-2 allumette M1	Eponge humide avec savon doux Damp sponge with soft soap
♣ King L	100% Polyester Trévira CS	260 g/m2	60 000 cycles 60 000 rubs	6	EN 1021-1 cigarette EN 1021-2 allumette M1	Perchloréthylène à moins de 25% / solvants fluorés Perchloroethylene for less than 25% / fluorinated solvents
♠ Gingko	85% PVC 15% Coton	800 g/m2	100 000 cycles 100 000 rubs	>6	EN 1021/1 cigarette EN 1021/2 allumette M1 AM18	Eponge humide et savon doux. Tous détergents, solvants et détachants du commerce sont à éviter. Damp sponge and soft soap. Avoid all kinds of detergent and trade solvents.



> SERVICE COMMERCIAL :

BRM Mobilier
Parc d'Activité de St Porchaire
BP 54 - 81 boulevard de Thouars
79302 Bressuire cedex
France
Tel : +33 5 49 82 10 62
Fax : +33 5 49 82 10 58

> E-MAIL : brm-mobilier@brm-mobilier.fr
> INTERNET : www.brm-bibliotheques.com

Nuancier



> INTERNATIONAL SALES DEPARTMENT :

BRM Library
Parc d'Activité de St Porchaire
BP 54 - 81 boulevard de Thouars
79302 Bressuire cedex
France
Tel: +33 5 49 82 10 54
Fax: +33 5 49 82 10 58

> E-MAIL: brm-library@brm-library.com
> WEBSITE: www.library-furniture-brm.com